



# WALL MOUNT PRO

Catalog 2020

 **METROBIT**  
INDUSTRY

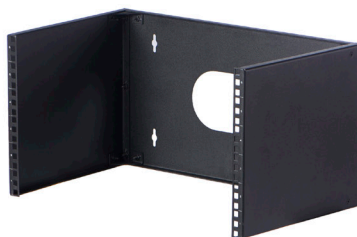
# WALL MOUNT PRO



# SWING TYPE PRO



# WALL MOUNT BRACKET





## WALL MOUNT PRO SIZE CHART



| PART NUMBER         | HEIGHT (mm) | WIDTH (mm) | DEPTH (mm) | RACK UNIT |
|---------------------|-------------|------------|------------|-----------|
| <b>MR-4-2318-W</b>  | <b>260</b>  | <b>600</b> | <b>450</b> | <b>4</b>  |
| <b>MR-6-2318-W</b>  | <b>350</b>  | <b>600</b> | <b>450</b> | <b>6</b>  |
| <b>MR-6-2323-W</b>  | <b>350</b>  | <b>600</b> | <b>600</b> | <b>6</b>  |
| <b>MR-9-2318-W</b>  | <b>480</b>  | <b>600</b> | <b>450</b> | <b>9</b>  |
| <b>MR-9-2323-W</b>  | <b>480</b>  | <b>600</b> | <b>600</b> | <b>9</b>  |
| <b>MR-12-2318-W</b> | <b>615</b>  | <b>600</b> | <b>450</b> | <b>12</b> |
| <b>MR-12-2323-W</b> | <b>615</b>  | <b>600</b> | <b>600</b> | <b>12</b> |
| <b>MR-15-2318-W</b> | <b>750</b>  | <b>600</b> | <b>450</b> | <b>15</b> |
| <b>MR-15-2323-W</b> | <b>750</b>  | <b>600</b> | <b>600</b> | <b>15</b> |
| <b>MR-18-2318-W</b> | <b>880</b>  | <b>600</b> | <b>450</b> | <b>18</b> |
| <b>MR-18-2323-W</b> | <b>880</b>  | <b>600</b> | <b>600</b> | <b>18</b> |

**WALL MOUNT PRO**



## SPACE SAVING

When there is a lack of floor space WALL MOUNT PRO is the solution.  
Can hold 220 lbs with the unique and tough structure design



## Easy Direct mounting

with 4 direct structure mounting holes  
ensures stability on 220 lbs load  
Removable side panels  
Cable entry on top

## INSIDE

4 Pre-installed bridges allow flexibility to move in depth and use accessories for either mounting devices or cable management.



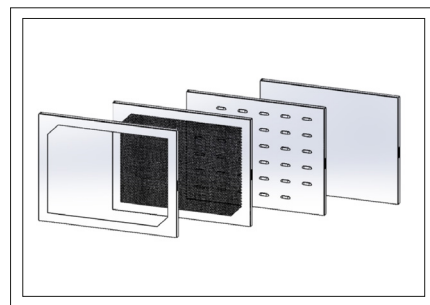
## VENTILATION

Fan module capable of two fans  
Perforated side panels and door available as option



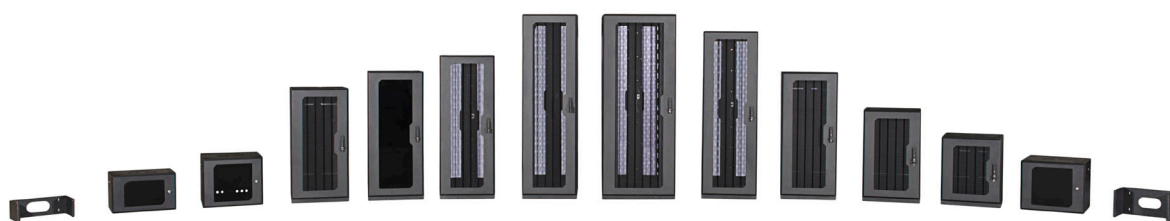
## Desktop

4 Pre-installed rubber feet allows you to use this product as a desktop solution were needed



## Door Options:

Tempered Glass front door  
Plexi Glass front door  
Perforated front door



## SWING TYPE WALL MOUNT SIZE CHART



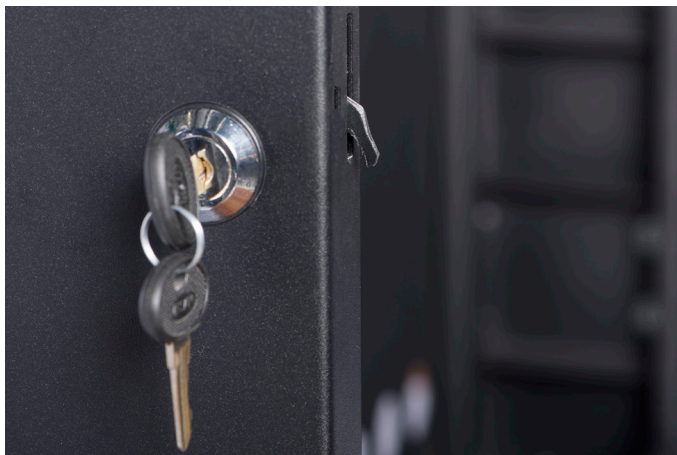
| PART NUMBER          | HEIGHT (mm) | WIDTH (mm) | DEPTH (mm)     | RACK UNIT |
|----------------------|-------------|------------|----------------|-----------|
| <b>MR-4-2323-ST</b>  | <b>260</b>  | <b>600</b> | <b>100+500</b> | <b>4</b>  |
| <b>MR-6-2323-ST</b>  | <b>350</b>  | <b>600</b> | <b>100+500</b> | <b>6</b>  |
| <b>MR-9-2323-ST</b>  | <b>480</b>  | <b>600</b> | <b>100+500</b> | <b>9</b>  |
| <b>MR-12-2323-ST</b> | <b>615</b>  | <b>600</b> | <b>100+500</b> | <b>12</b> |
| <b>MR-15-2323-ST</b> | <b>750</b>  | <b>600</b> | <b>100+500</b> | <b>15</b> |
| <b>MR-18-2323-ST</b> | <b>880</b>  | <b>600</b> | <b>100+500</b> | <b>18</b> |

SWING TYPE WALL MOUNT



**Revolving:**  
Tough leaf hinges with no access from outer side guarantees safe and stable revolving while the cabinet is fully loaded.

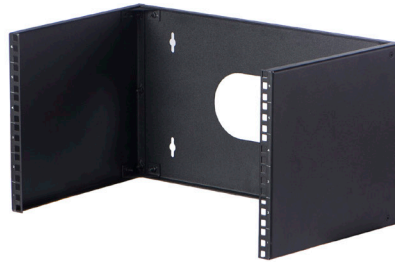
**Closing Guide Pin:**  
With the closing guide pin you will never face unbalanced rack while it is closed.  
There is no unbalanced weight load



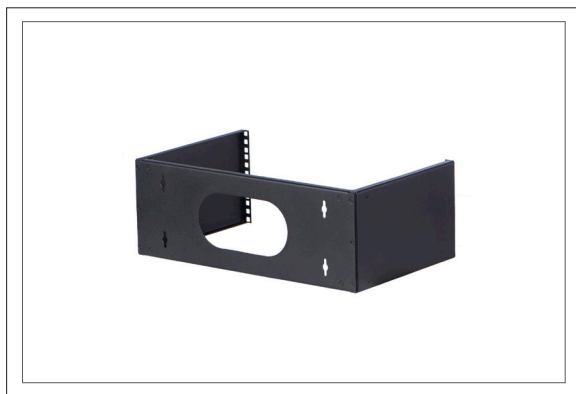
**Cable storage:**  
Key lockable cable storage space with top, back and bottom cable entry. 100 mm depth.



## WALL BRACKET SIZE CHART



| PART NUMBER         | HEIGHT (mm) | WIDTH (mm) | DEPTH (mm) | RACK UNIT |
|---------------------|-------------|------------|------------|-----------|
| <b>MR-4-2323-WB</b> | <b>180</b>  | <b>495</b> | <b>300</b> | <b>4</b>  |
| <b>MR-6-2323-WB</b> | <b>270</b>  | <b>495</b> | <b>300</b> | <b>6</b>  |

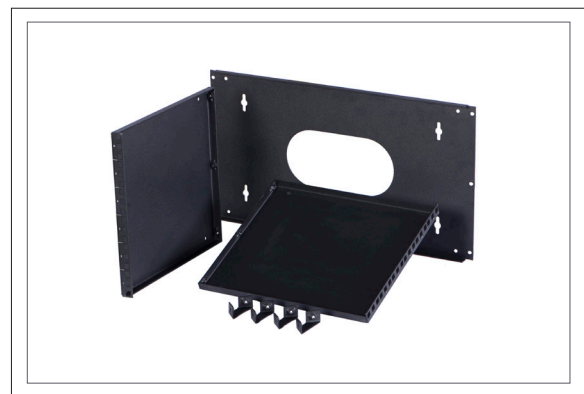


### Easy to Handle:

Ships as a flat pack and assembles in minutes.  
4 corner supports ensures stability on wall.

### Direct Wall Mounting:

Easy, Minimal and cost effective wall mounting solution.  
Stackable to reach and desired height.





Metrobit Industry Inc.

16-40 North Rivermede Rd, Vaughan, ON, L4K 2H3

| [www.metrobit.ca](http://www.metrobit.ca) | Telephone: 1-905-764-6666 Ext. 1000

email: [industry@metrobit.ca](mailto:industry@metrobit.ca)